



**Installation Instructions**  
EPLAN Education Version 2.8  
Status: 06/2019



EPLAN Software & Service GmbH & Co. KG  
Technical information



Copyright © 2017 EPLAN Software & Service GmbH & Co. KG

EPLAN Software & Service GmbH & Co. KG assumes no liability for either technical or printing errors, or for deficiencies in this technical information and cannot be held liable for damages that may result directly or indirectly from the delivery, performance, and use of this material.

This document contains legally protected proprietary information that is subject to copyright. All rights are protected. This document or parts of this document may not be copied or reproduced by any other means without the prior consent of EPLAN Software & Service GmbH & Co. KG.

The software described in this document is subject to a license agreement. The use and reproduction of the software is only permitted within the framework of this agreement.

RITTAL® is a registered trademark of Rittal GmbH & Co. KG.

EPLAN®, EPLAN Electric P8®, EPLAN Fluid®, EPLAN Preplanning®, EPLAN PPE®, EPLAN Pro Panel® and EPLAN Harness proD® are registered trademarks of EPLAN Software & Service GmbH & Co. KG.

Windows 7®, Windows 8.1®, Windows Server 2008 R2®, Windows 10®, Windows Server 2012®, Microsoft Windows®, Microsoft® Excel®, Microsoft® Access® and Notepad® are registered trademarks of the Microsoft Corporation.

PC WORX®, CLIP PROJECT®, and INTERBUS® are registered trademarks of Phoenix Contact GmbH & Co.

AutoCAD® and AutoCAD Inventor® are registered trademarks of Autodesk, Inc.

STEP 7®, SIMATIC® and SIMATIC HW Konfig.® are registered trademarks of Siemens AG.

InstallShield® is a registered trademark of InstallShield, Inc.

Adobe® Reader® and Adobe® Acrobat® are registered trademarks of Adobe Systems Inc.

TwinCAT® is a registered trademark of Beckhoff Automation GmbH.

Unity Pro® is a registered trademark of Schneider Electric.

RSLogix 5000® and RSLogix Architect® are registered trademarks of Rockwell Automation.

All other product and trade names and company names are trademarks or registered trademarks of their respective owners.

EPLAN uses the Open Source software 7-Zip (7z.dll), Copyright © by Igor Pavlov. The source code of 7-Zip is subject to the GNU Lesser General Public License (LGPL). The source code of 7-Zip as well as details on this license are available on the following Internet page: <http://www.7-zip.org>

EPLAN uses the Open-Source-Software Open CASCADE, Copyright © by Open CASCADE S.A.S. The source code of Open CASCADE are subject to the Open CASCADE Technology Public License. For the Open CASCADE source code and more details about this license, go to: <http://www.opencascade.org>

EPLAN provides an import function which uses eCl@ss. The use of the eCl@ss standard requires a license. Please register and order in the DownloadPortal: <http://www.eclassedownload.com>

# Table of contents

<b>Introduction .....</b>	<b>4</b>
<b>Notes for the Reader .....</b>	<b>5</b>
<b>Requirements for Installation.....</b>	<b>6</b>
<b>Registration .....</b>	<b>7</b>
<b>Installation .....</b>	<b>8</b>
<b>Directories of the EPLAN Setup Manager.....</b>	<b>8</b>
<b>Installation with local directories .....</b>	<b>9</b>
<b>Explanation of the program components for the installation .....</b>	<b>14</b>
<b>Installation with network directories.....</b>	<b>15</b>
<b>How does the EPLAN Education Installation function? .....</b>	<b>16</b>
<b>Entitlement ID (EID) .....</b>	<b>17</b>
<b>What happens during the first start of EPLAN Education? .....</b>	<b>17</b>
<b>Activation of the license .....</b>	<b>17</b>
<b>The directory structure of EPLAN Education .....</b>	<b>21</b>
<b>If an EPLAN Education version was already installed on the PC .....</b>	<b>24</b>
<b>Appendix .....</b>	<b>26</b>
<b>Sample E-Mail .....</b>	<b>26</b>



# Introduction

Dear users,

The team at EPLAN Software & Service GmbH & Co. KG is pleased to welcome you as a new user.

This document is meant to help you with the installation.

In all, the corresponding procedure is possible for the following program variants of the EPLAN platform:

- EPLAN CPM
- EPLAN Education
- EPLAN Electric P8
- EPLAN Fluid
- EPLAN Preplanning
- EPLAN Pro Panel
- EPLAN Trial

## Notes for the Reader

Before you begin reading, please note the following symbols and styles used in this document:

### **Warning:**

Text preceded by this symbol contains a warning; you should be absolutely sure to read this warning before proceeding!!

### **Note:**

Text preceded by this symbol contains extra notes.

### **Tip:**

Useful tips to facilitate your interaction with the program are presented after this image.

### **Example:**

Examples are highlighted by this symbol.

# Requirements for Installation

In order to carry out the installation, an operating system approved for the version to be installed has to be installed on the system. Microsoft Windows 7, Microsoft Windows 8.1 and Microsoft Windows 10 are approved only in the 64-bit version respectively. Microsoft Windows XP and Microsoft Vista are no longer supported since EPLAN Platform 2.3. For further information, please refer to the EPLAN NEWS for Version 2.8. The EPLAN NEWS are available at [http://www.eplan.help/help/platform/2.8/en-US/help/EPLAN\\_Help.htm](http://www.eplan.help/help/platform/2.8/en-US/help/EPLAN_Help.htm) EPLAN-News.

Administrator rights are required for the installation and for the first start after installation of the software. During the first start of EPLAN Education select the Expert scope of menu.

In order to work with EPLAN Education the user must have write privileges for the directories in which the software stores data. These generally are:

- The program directory
- The directory of the original master data
- The system master data directory
- The directories for the settings databases
  - o User
  - o Workstation
  - o Company
- The directory for the log file EpLog.txt

The free memory required for the software and master data must be available. If you validate the software with a local dongle, rights to change are required on the directory for the license file.

In Windows 7 systems the file lies in the directory:

C:\Users\Public\EPLAN\Common

In the German user interface of Windows 7 this path is displayed as follows:

C:\Benutzer\Öffentlich\EPLAN\Common

# Registration

To be able to use EPLAN Education you have to register. This is necessary for the activation to be assigned and to be correspondingly generated.

Please use the form integrated in the setup and send us your data.

## EPLAN Education Registration

Thank you for your interest in the EPLAN Education version. For the registration please fill out all the fields below! In case of a question / problem please contact [education@eplan.de](mailto:education@eplan.de).

During the installation, the validation code will be sent to the e-mail address you entered when registering. If you do not have internet access at the moment, you can register via the internet later by running Setup.exe again. The validation code will then be e-mailed to you. When you run the program for the first time, enter this validation code via the License button.

I confirm that the following information given is correct. I know that I may only use the software in the context of my education, i.e. not for any commercial purposes whatsoever. I have no claim to support or to warranty. The licensed software may not be passed on to third parties.



Salutation	Mr. <input type="button" value="v"/> *
Title	<input type="text"/>
First name	<input type="text"/> *
Last name	<input type="text"/> *
Address	<input type="text"/> *
Postalcode	<input type="text"/> *
City / State	<input type="text"/> *
Country	Select your country <input type="button" value="v"/> *
Email	<input type="text"/> *
Email (confirm Email)	<input type="text"/> *
Phone No.	<input type="text"/> *
Name of University	<input type="text"/> *
Course of studies	<input type="text"/> *
Duration of studies	<input type="text"/> *
Career aspiration	<input type="text"/> *
Student ID	<input type="text"/> *
How did you hear about this trial version?	Recommended by a local EPLAN office/distributor <input type="button" value="v"/> *
<input type="button" value="Send"/> <input type="button" value="Reset"/>	

© 2015 EPLAN Software & Service.

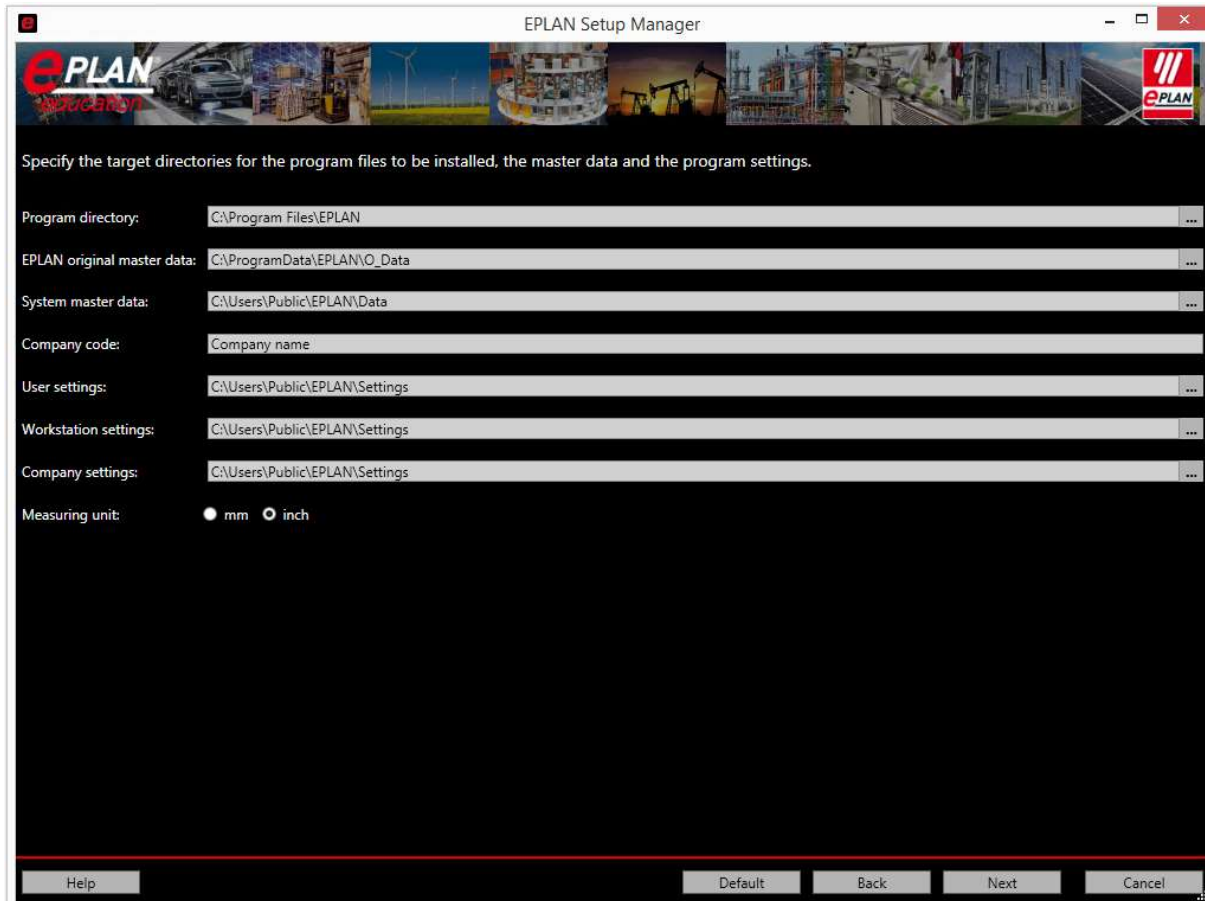
We will check the plausibility of the data you entered. After the check we will send your personal Entitlement ID (EID) to the e-mail address you specified.

If at that time you do not have Internet access or skipped the registration, you can register at a later time on the Internet by running the Setup.exe file again.

# Installation

## Directories of the EPLAN Setup Manager

The following settings are suggested as the default for the installation of EPLAN Education. These can be accepted as they are. However, since data is generally stored on a server drive at most customers, it makes sense to customize these settings. The company code should always be adapted. It will also be included in the folder structure created by the installation.





## Installation with local directories

In this installation all the data is stored locally. This variant is advisable for laptops that will also be used separated from the company network. The settings databases (user, workstation and company) in particular should be stored locally on a laptop that is also used without a network.

The Setup is started after the storage medium has been inserted. If this process is not started automatically, you can use the Explorer to access the storage medium and start the "Setup.exe" file in the root directory by double-clicking it.



The screenshot shows the 'EPLAN Setup Manager' window. At the top, there is a banner with the EPLAN Education logo and various industrial images. Below the banner, a dropdown menu shows 'Available programs: Education (x64)'. A 'Product information' dropdown is also visible. The main content area is titled 'EPLAN Education Registration' and contains the following text:

Thank you for your interest in the EPLAN Education version. For the registration please fill out all the fields below! In case of a question / problem please contact [education@eplan.de](mailto:education@eplan.de).

During the installation, the validation code will be sent to the e-mail address you entered when registering. If you do not have internet access at the moment, you can register via the internet later by running Setup.exe again. The validation code will then be e-mailed to you. When you run the program for the first time, enter this validation code via the License button.


I confirm that the following information given is correct. I know that I may only use the software in the context of my education, i.e. not for any commercial purposes whatsoever. I have no claim to support or to warranty. The licensed software may not be passed on to third parties.

The registration form includes the following fields:

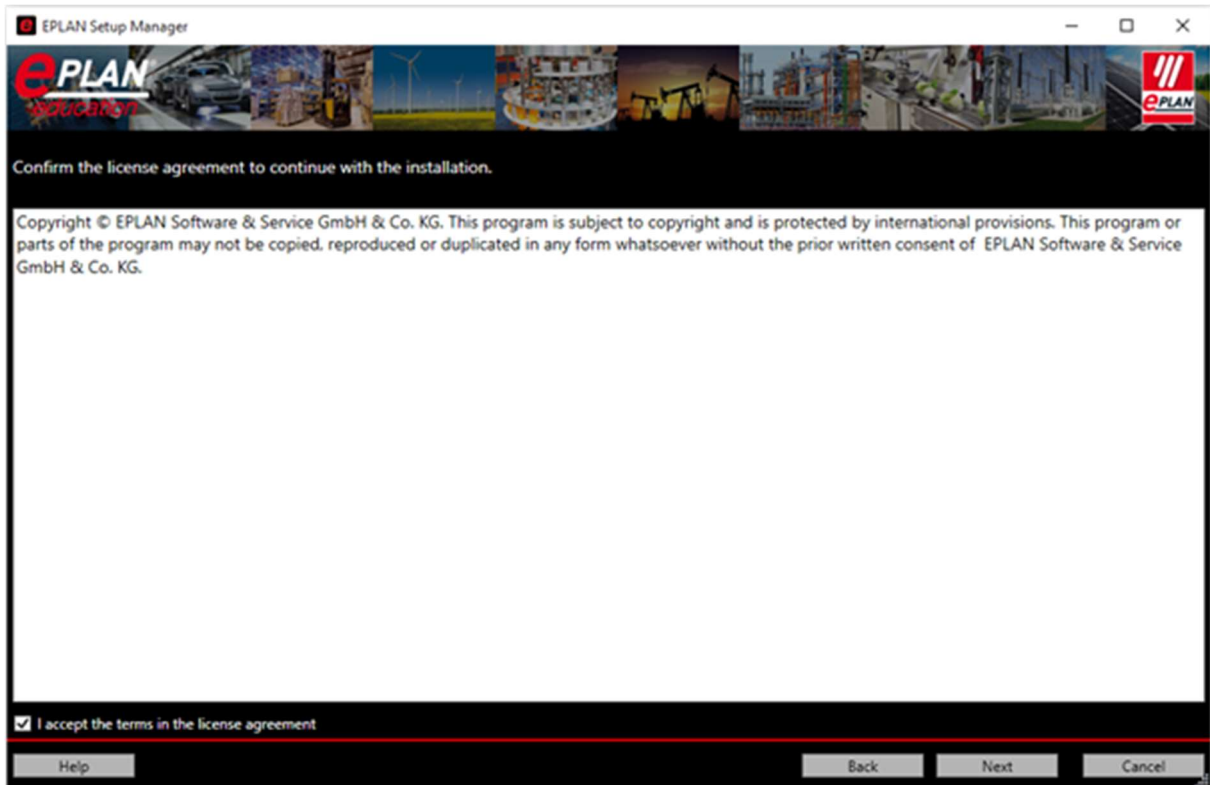
- Salutation: Mr. (dropdown)
- Title: (text input)
- First name: (text input)
- Last name: (text input)
- Address: (text input)
- Postalcode: (text input)
- City / State: (text input)
- Country: Select your country (dropdown)
- Email: (text input)
- Email (confirm Email): (text input)
- Phone No.: (text input)
- Name of University: (text input)
- Course of studies: (text input)
- Duration of studies: (text input)
- Career aspiration: (text input)
- Student ID: (text input)
- How did you hear about this trial version?: Recommended by a local EPLAN office/distributor (dropdown)

Buttons for 'Send', 'Reset', 'Help', 'Next', and 'Cancel' are located at the bottom of the window.

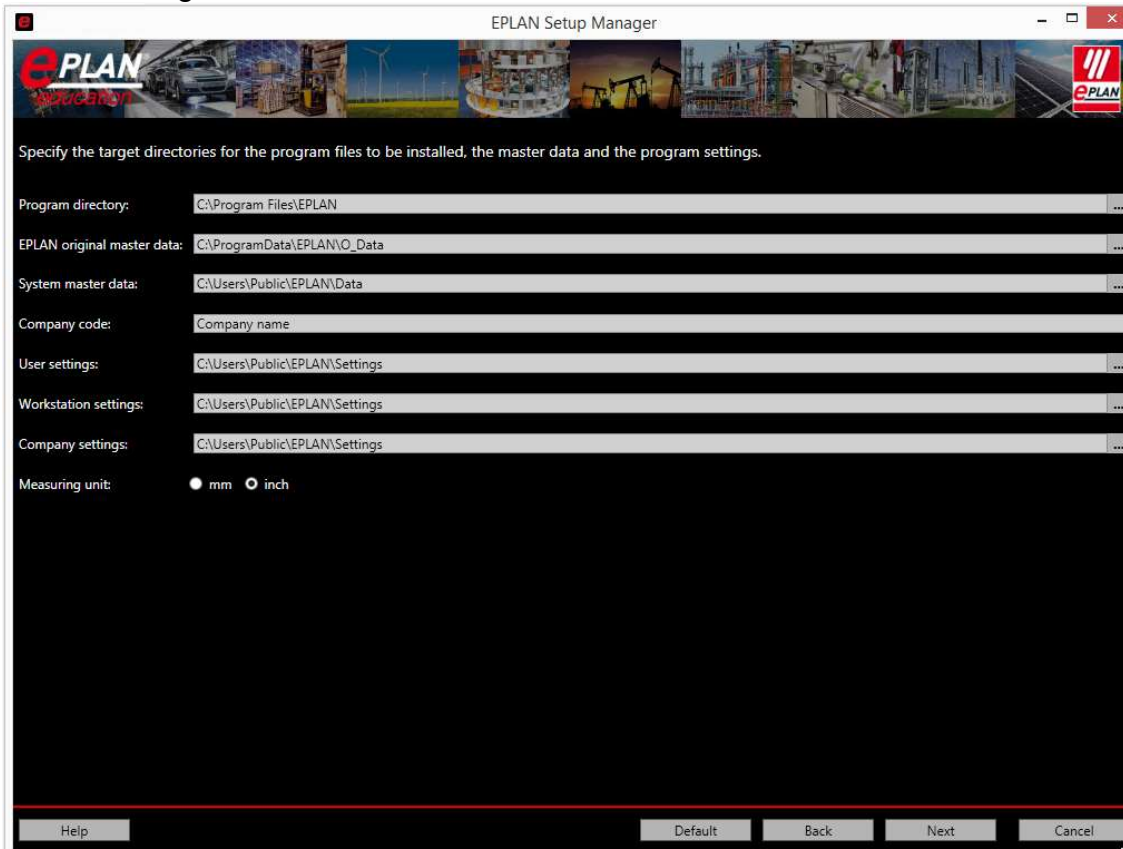
The first window of the installation lists the available program Education (Win64).

 **Note:** If the 64-bit version of the EPLAN platform is used, Microsoft Office 64-bit or an SQL Server is required for the parts and foreign language database.


In the second window of the installation you have to accept the license agreements before you can continue with the installation.



The third window handles the directory settings and the company code. Please note: These settings have an effect on the future use of the software.



The following settings are recommended for the local installation (based on a Windows 7 64-bit system):

 **Note:** Entries in < > are generated automatically. Entries in ( ) specify the required authorizations **when working** with EPLAN Education. Rights to change are required for all directories for the installation.

Enter your company name or an abbreviation of it at the company code. This entry is used for the directory structure of your system master data.

**Program directory:**

C:\Program Files\EPLAN\<Product name>\<Version No.> (Read)

**Original master data:**

C:\ProgramData\EPLAN\EPLAN\_ORIGINAL\_DATA\<Product Data>\<Version No.> (Read)

**System master data:**

C:\Users\Public\EPLAN\EPLAN\_DATA\<Macros, images, etc.>\<Company code> (Change)

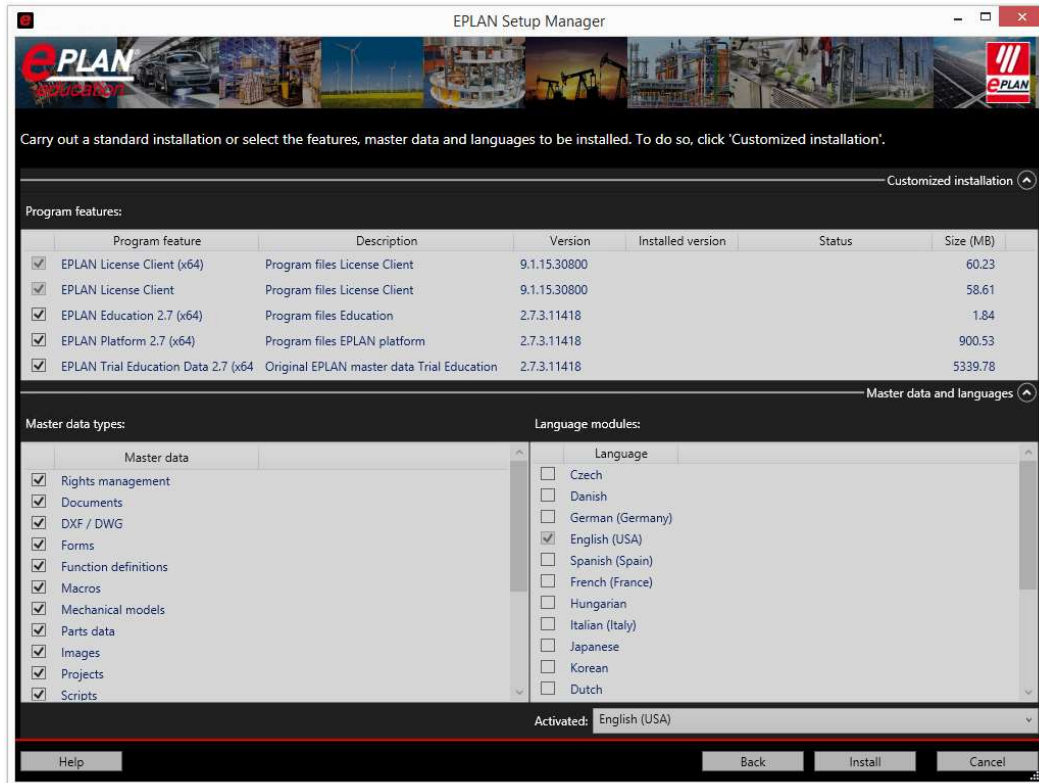
**Settings databases (user / workstation / company):**

C:\Users\Public\EPLAN\EPLAN\_SETTINGS\<Product name>\<Version No..>\<x64>\<Cfg>  
(Change)

## Explanation of the designations of the directories for the installation

- **Program directory:**  
The program components required for EPLAN Education are stored here. This folder and its subfolders are generated directly by the installation. For the installation of the 64-bit variant the default directory begins with C:\Program Files\...
- **EPLAN original master data:**  
The EPLAN P8 original master data is stored in this directory. During the installation this data is installed into the directory specified in the Setup dialog. This data is used to generate the customer code directories during the EPLAN start. As of Version 2.2. the folder structure in this directory is always generated in English.
- **System master data:**  
No data is stored here yet by the installation itself. The directories are not generated by the installation, but rather by the first start of the software. This is the directory that contains the master data (forms, plot frames, symbols, projects, etc.) with which you subsequently work in EPLAN P8. To ensure that this data is unique, your company code is created as a subdirectory under the directories, for example macros.
- **Company code:**  
You can enter your company name or an abbreviation of it in this field. The entry should not be too long and should not contain any special characters. The company code is used during the first start of the software as the designation for the subfolders in the system master data.
- **User settings:**  
The user settings specified by you are stored here. The data in this directory is not created until the first start of the software.
- **Workstation settings:**  
The workstation settings specified by you are stored here. The data in this directory is not created until the first start of the software.
- **Company settings:**  
The company settings specified by you are stored here. The data in this directory is not created until the first start of the software.
- **Measuring unit:**  
The measuring unit that you wish to use later in the software is set here. This setting can be changed after the installation in the software settings.

The components to be installed are displayed in the fourth window.



The language entered at "Activated" is used for the user interface when the software is started, in as far as it is licensed.

After the **Install** button has been clicked, the installation of *EPLAN Education* is started.

If German is selected under "Activated" as the language, German is installed automatically for the online help. If a different language is selected in the "Activated" field, the online help is installed in English. Further languages can be installed later after the program has been started and the online help called up by using the EPLAN Download Manager.

In the course of the installation the upper section of the Setup Manager provides information about the installation status.

Any warning that may be displayed in the middle section of the EPLAN Setup Manager does not have any influence on the installation itself. If you confirm this message and allow the execution of the content, further information about the EPLAN Platform 2.8 is displayed in the lower section.

## Explanation of the program components for the installation

- **EPLAN License Client:**

Required for licensing with a dongle or via a network license. Is used by all the installed EPLAN programs on one system. If the 64-bit version of EPLAN Education is used, the 64-bit License Client is installed. If a 32-bit License Client already exists on the system, this is up-dated additionally. Both License Clients are then available with the same build number.

- **EPLAN Education:**

Required program components for EPLAN Education. These include the install.xml and the templates for the settings databases.

- **EPLAN Trail Education Data:**

Original master data for the electrical components of EPLAN Education. They include, for example, the IEC symbol libraries, forms for terminal diagrams. These do not include, for example, the parts database because it can also be used by other program components such as Fluid.

- **EPLAN Platform:**

Program components of the EPLAN platform. This is the main part of the program and also includes EPLAN.exe, among others. The user interface and help languages selected during the installation also belong to the EPLAN P8 platform.

- **EPLAN Platform Data:**

This includes non-project-specific original master data such as the parts database. But also some symbol libraries such as SPECIAL since these symbols are required by electrical engineering and fluid power users.

# Installation with network directories

This installation can be used on systems that are permanently connected to the company network. Working without this network is only possible through manual intervention in EPLAN Education files or through a new installation. The directories named here only serve as an example for which data it makes sense to store on a server.

The installation of the program data at a network drive is not supported / possible.



Note: Entries in < > are generated automatically. Entries in ( ) specify the required authorizations **when working** with EPLAN P8. Rights to change are required for all the specified directories for the installation.

## Program directory:

C:\Program Files\EPLAN\<Product name>\<Version No.> (Read)

## Original master data:

P:\CAE\_System\EPLAN\O\_DATA\<Product data>\<Version No.> (Read)

## System master data:

P:\CAE\_System\EPLAN\DATA\<Macros, images, etc.>\<Company code> (Change)

## Settings databases (user):

C:\Users\Public\EPLAN\SETTINGS\<Product name>\<Version No.>\<x64>\<Cfg> (Change)

## Settings databases (workstation):

C:\Users\Public\EPLAN\SETTINGS\<Product name>\<Version No.>\<x64>\<Cfg> (Change)

## Settings databases (company):

P:\CAE\_System\EPLAN\SETTINGS\<Product name>\<Version No.>\<x64>\<Cfg> (Change)

When installing with network paths we recommend using UNC paths instead of drive characters.

## A UNC path specification for the original master data an example:

\\SAMPLEcompany.lan\CAE\_DATEN\EPLAN\O\_DATA\<Product data>\<Version No.>

Since a part of the settings databases and, through the system master data, also the rights management data, are stored on a server drive (in the example P:\), it is not possible to start EPLAN Education without a network connection. This also applies if you have not licensed the Rights Management module.



Note: You can use this directory suggestion also for a local installation if, for example, the master data (original and system) are to be placed on a different partition / hard disk on your PC. In this case you should use the same path for the settings database (company) as for the settings database (workstation).

# How does the EPLAN Education Installation function?

This part of the document discusses the actions of the installation and the resulting directories. It is assumed that a new EPLAN Education installation is being carried out on a PC with Windows 8.1 64-bit on which no previous EPLAN P8 was installed.

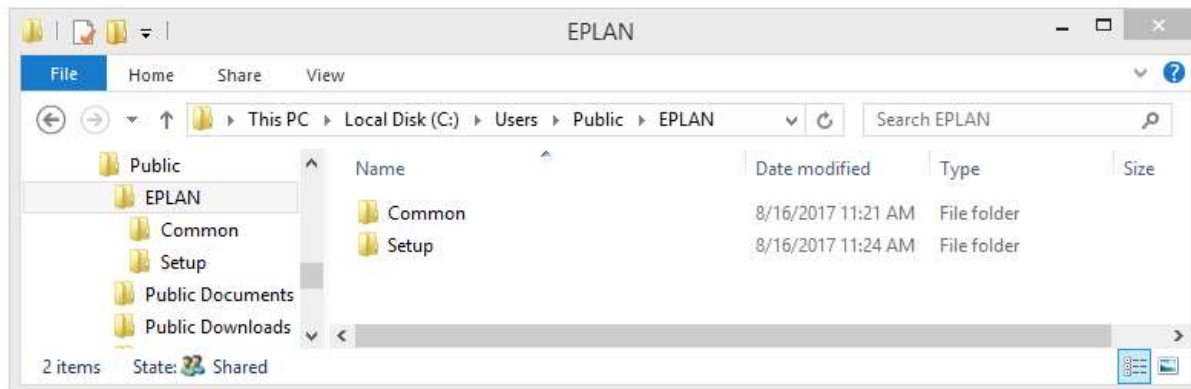
## What happens during installation?

The installation of EPLAN Education generates the following directories:

- Program data (Electric P8, Education Data, Platform and Platform Data)
- EPLAN original master data (O\_Data)
- Settings databases (Settings)

Your personal settings databases are not created in this subfolder until the first start of EPLAN P8.

- Internal installation data (Setup)



The directories for the system master data (Data) are not yet generated in this step.

In addition, the EPLAN License Client 64-bit for the licensing functions is installed. The following path is used as the default here:

C:\Program Files\EPLAN\Common\

The EPLAN License Client 32-bit is still located under the directory C:\Program Files (x86)\EPLAN\COMMON\

It is updated during the installation of the EPLAN Platform 64-bit, if appropriate.

You cannot customize these paths during the installation.



## Entitlement ID (EID)

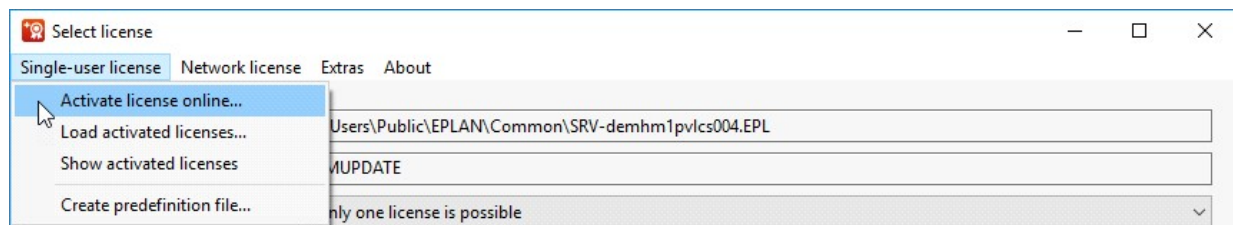
A new Entitlement ID (EID) is required for this version of EPLAN. You will receive it by email after your registration.

## What happens during the first start of EPLAN Education?

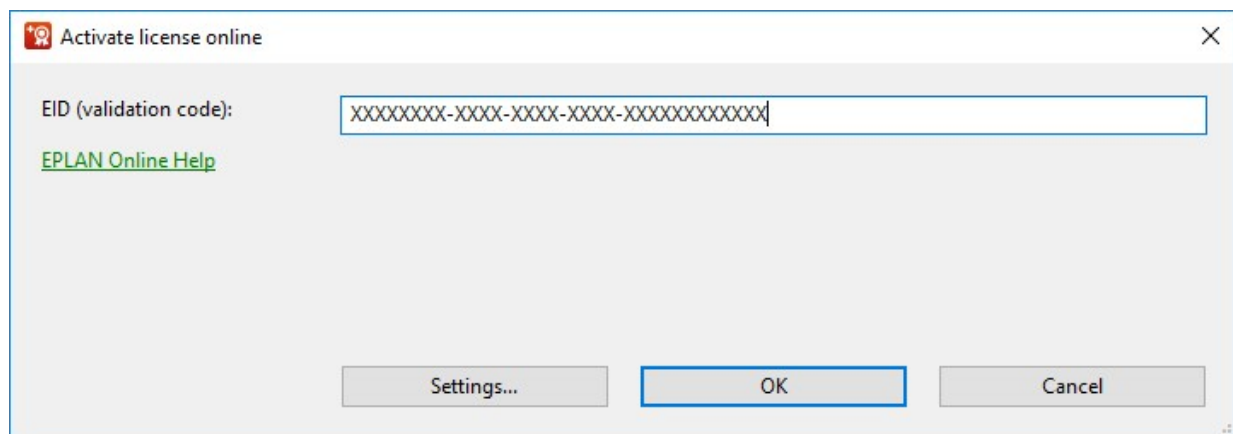
**Note:** The first start of EPLAN Education must be carried out with administrator rights, like the installation itself.


## Activation of the license

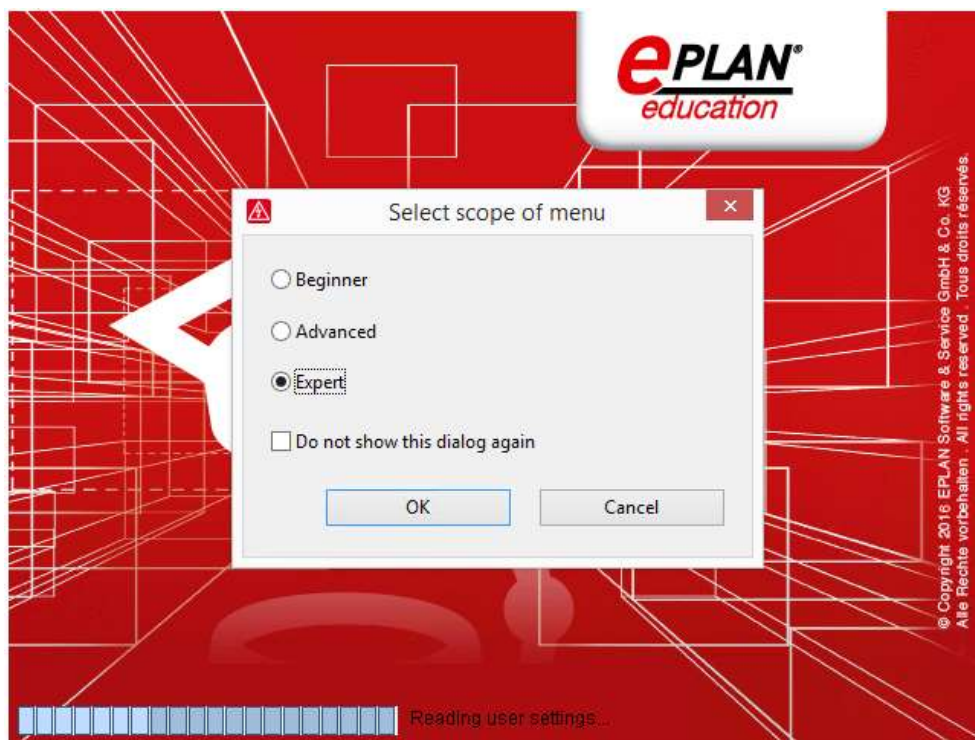
At the start of EPLAN P8 the activation of your Entitlement ID is required. Directly after starting the software by the Icon the license manager opens. Select the menu Single-user license and call up the menu item Activate license online.



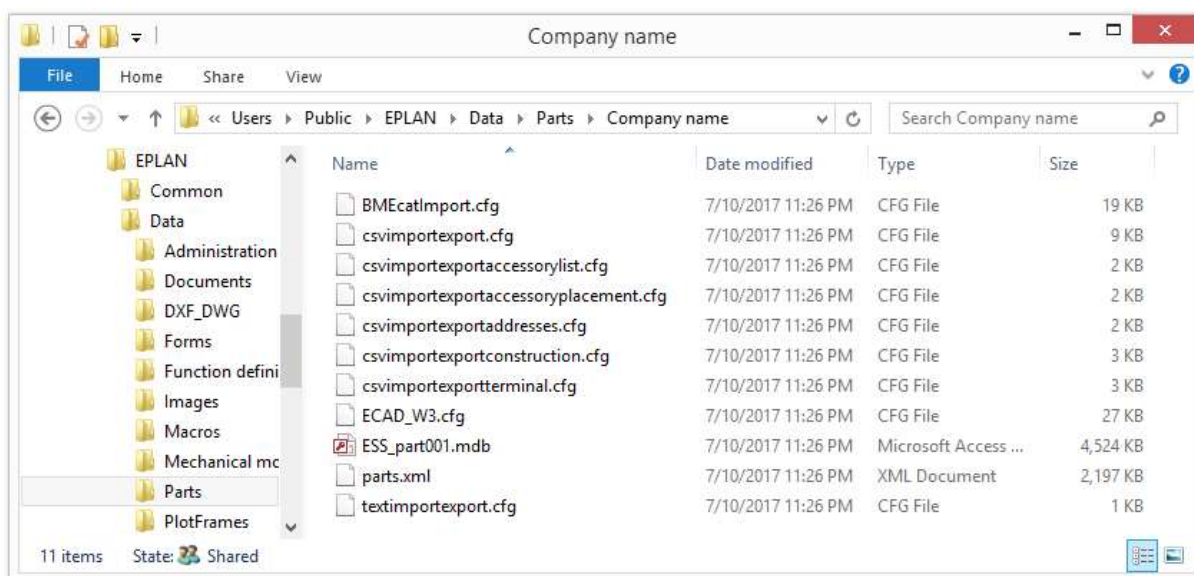
Then insert the Entitlement ID you have received by email into the following dialog.



 **Note:** Select the setting Expert in the "Select scope of menu" dialog.



The first start of EPLAN P8 requires somewhat longer than the subsequent start procedures. This is because the following actions have to be carried out during the first start: Generation of the directory structure for the system master data and copying of the original master data into the system master data directories.



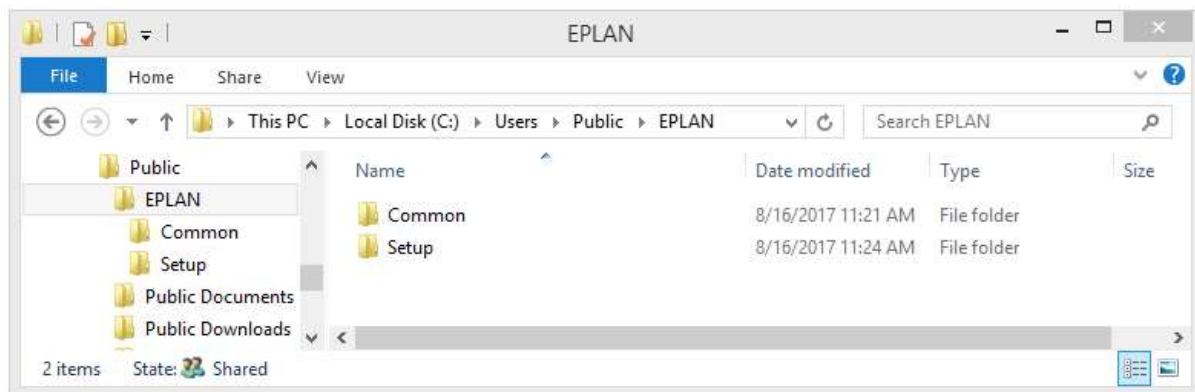
(Parts data from the system master data as an example of the directories generated after the first start)

The **Data** folder was generated during the first start and provided with the structure for the system master data, for example the **Parts** folder. Folders are also generated here with the company code assigned by you.

The data in the SUP folder were copied from the corresponding directory under O\_Data (EPLAN original master data).

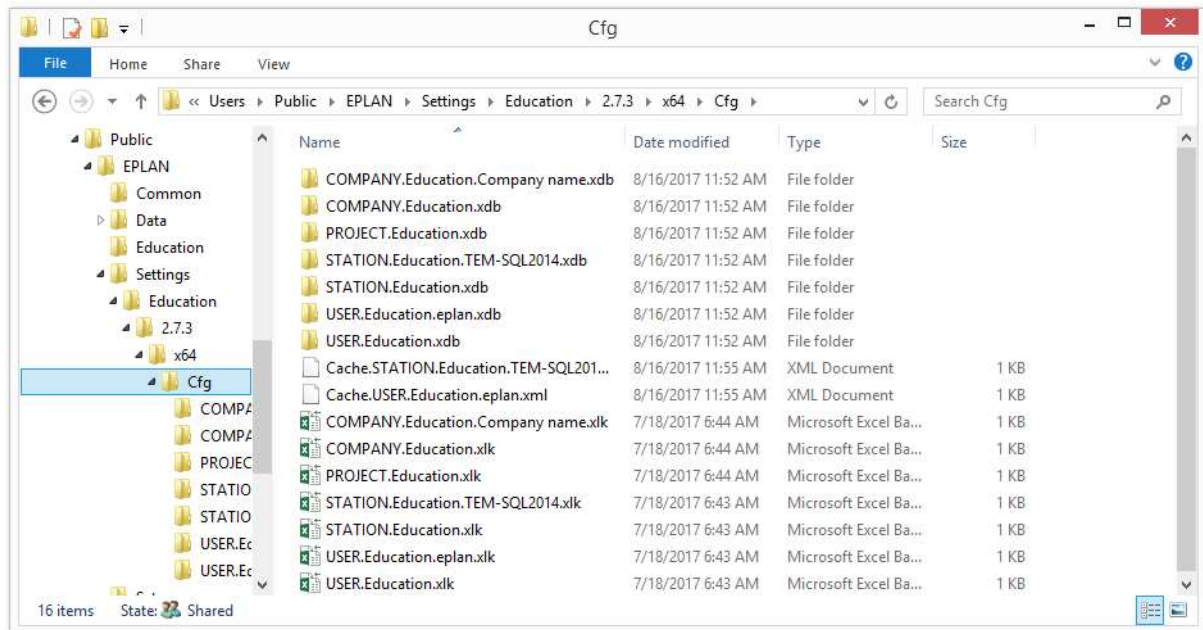
Generation of the settings databases for the user, workstation and company settings.

The following screenshot shows the folder for the settings databases directly after the installation. The directory for the settings databases, **Settings**, is generated with the first start of the application.



(Eplan\_Settings **before** the first start of EPLAN P8)

Your settings databases are generated during the first start of EPLAN Electric P8.



(Eplan\_Settings after the first start of EPLAN P8)

## The directory structure of EPLAN Education

The following section discusses the directory structure of EPLAN Education on the basis of some screenshots. It deals with the structure of the original master data and the system master data resulting from them during the first start of EPLAN Electric P8.

In this example the original master data are stored under the directory O\_Data. The directory EPLAN is generated under this folder. The master data structure is located within this directory with the following folders:

Trial Education Data:

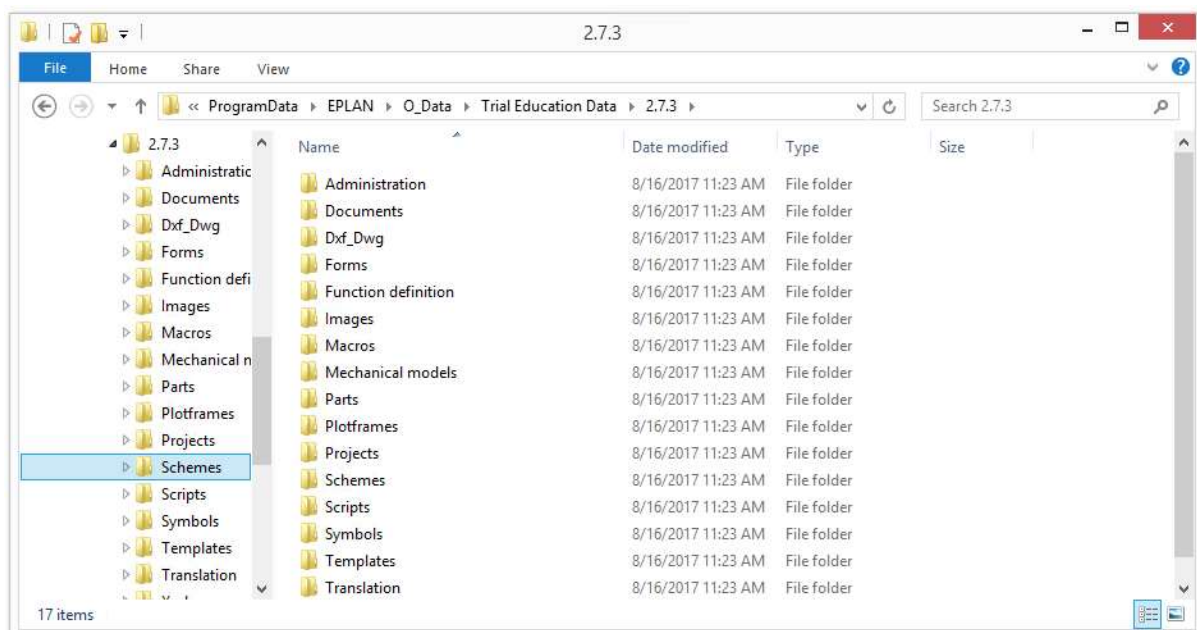
Forms, Images, Macros, Plotframes, Projects, Schemes, Symbols and Templates

Each of these folders contains the subfolder EPLAN that then contains the corresponding original master data.

### O\_Data (original master data)

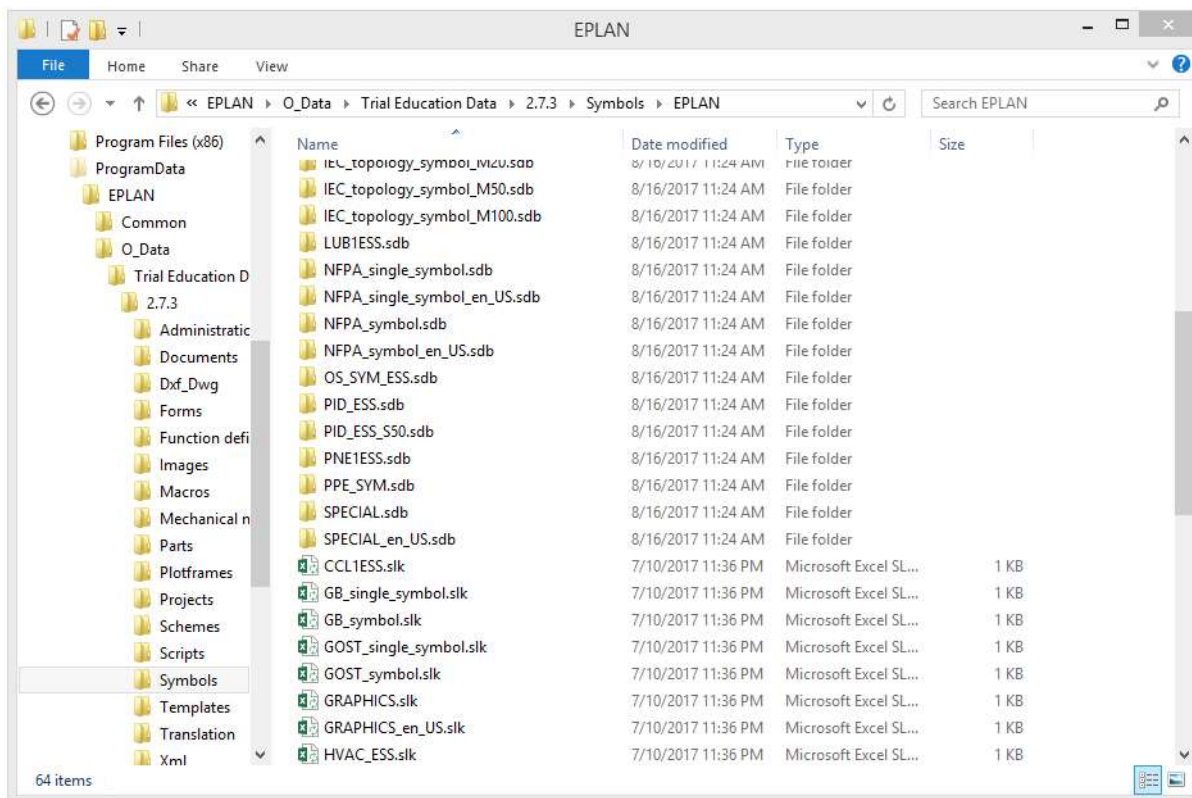
This directory contains the original master data that apply for the electrical field. Here you will find, for example, the symbol libraries IEC\_Symbol, IEC\_Single\_Symbol for electrical engineering, but not the special library SPECIAL. The SPECIAL library contains symbols that apply not only for the electrical field.

It does not contain any parts database either, because the parts contained there are, for example, also used for the fluid power and mechanical fields.



(The original master data directory for parts under Education is no longer generated, because this folder would be empty anyway.)

The original master data directory for symbols contains only the symbol libraries relevant for electrical engineering.

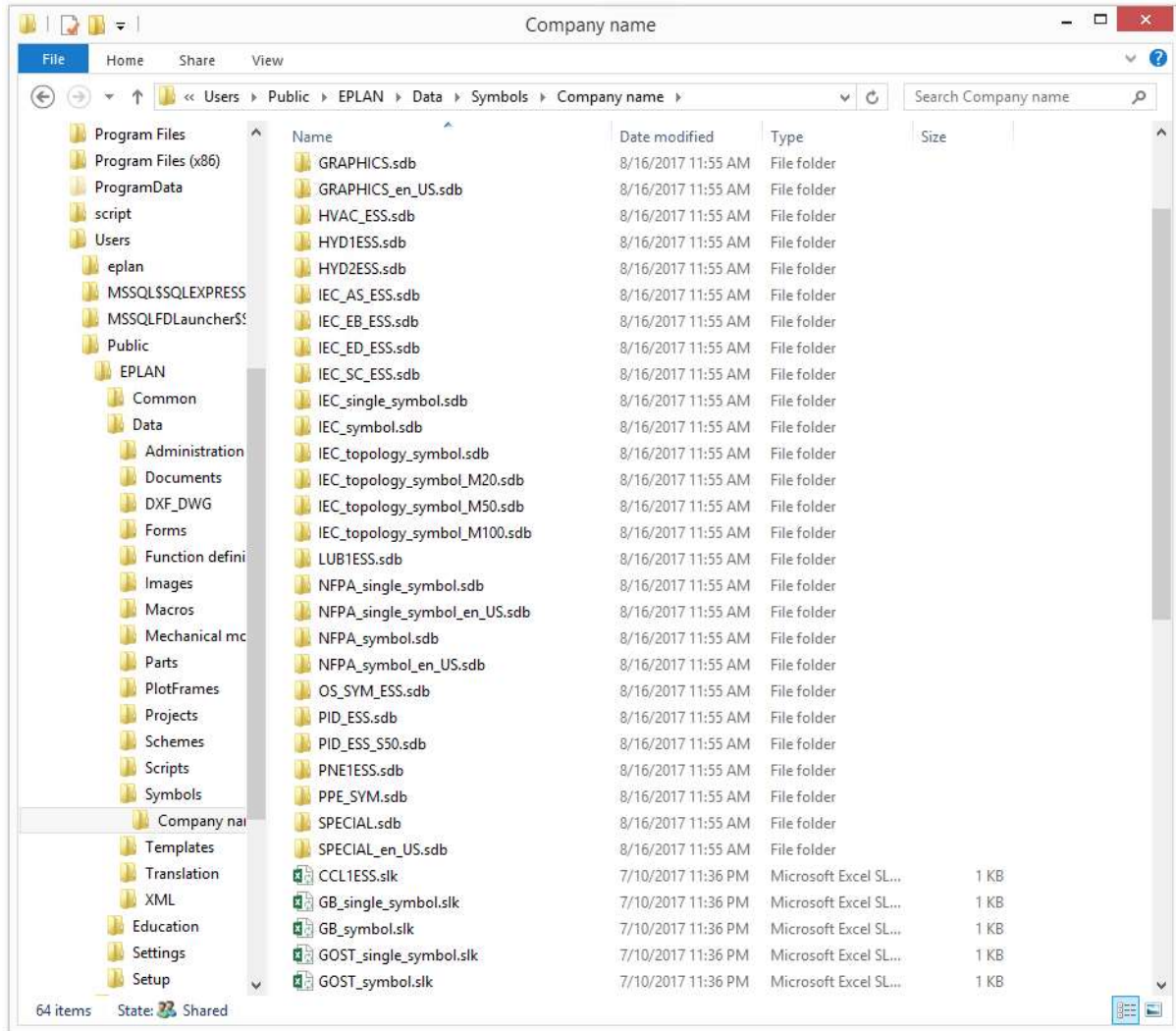


(The original master data for symbols under Education Data.)

### Data (system master data)

The system master data is copied into the directory specified by you during the first start, in the example **Data**. The EPLAN original master data serves as the source here.

The following screenshot shows the contents of the Symbols folder. A sub-folder with your company code is generated. The symbol libraries from the section Education Data (for example IEC\_Symbol) and from the section Platform Data (for example SPECIAL) have been copied together in this folder. The system master data therefore contain all the libraries that you require to work with EPLAN P8 after the first start of EPLAN P8.



(The system master data directory for symbols under Data after the first start.)

## If an EPLAN Education version was already installed on the PC

If a version of EPLAN Education was already installed on your system, you have two options for installing EPLAN Electric P8.

The program files are written automatically into their own directories since each new EPLAN Education version is a full version.

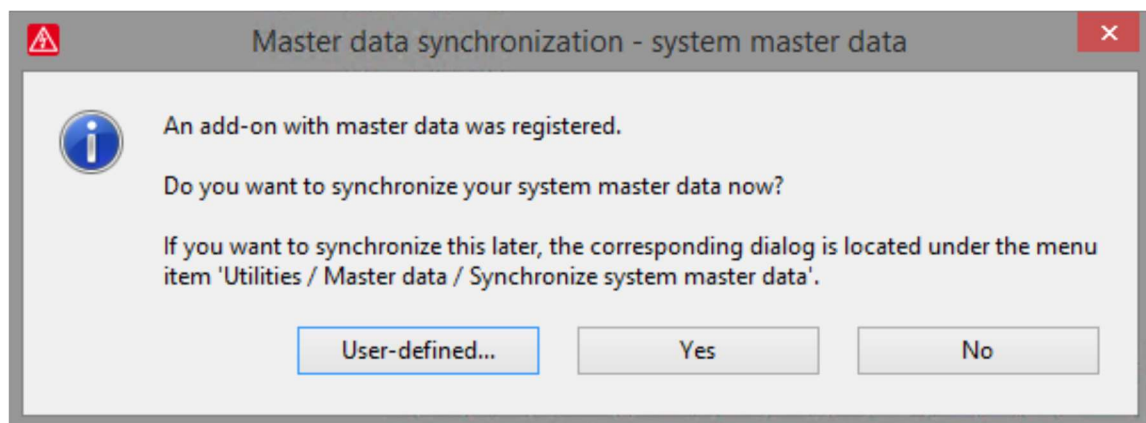
The first option is a completely separate installation with new directories. During the new installation you must enter a new directory for the master data. This should also be done for the settings databases. In this case you can use the directories for the local version as an example.

In this variant you work with separate master data, for example two separate parts managements.

The second option is the use of an existing system master data directory. During the installation you specify a directory for the EPLAN original master data, for example on the basis of the recommendation above.

For the system master data you specify the directory used for an existing EPLAN Education system master data. During the installation itself no change is carried out to this system master data directory.

During the first start select the **Expert scope of menu**. You are then prompted in a dialog whether you want to update the master data.

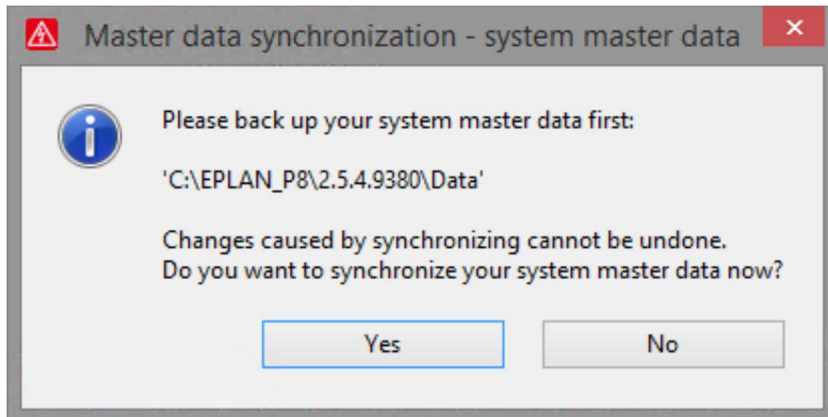


You can prevent updating here by selecting No. In this case no data is copied into your system master data directory.

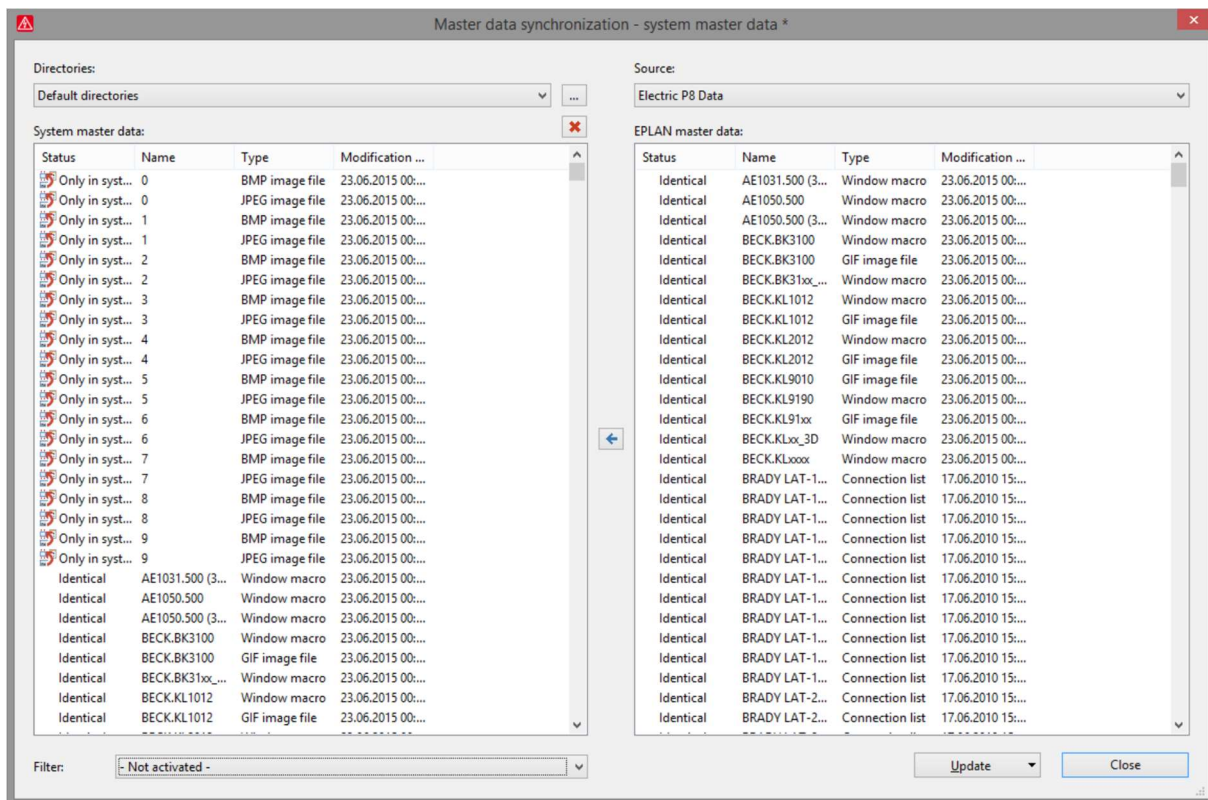
**Warning:** Before you update the master data create a backup of your master data. It is advisable to back up your system master data regularly.

If you select Yes, the newly installed EPLAN original master data is copied to the system master data directory specified by you after a query. It is generally advisable to also assign new names to your own master data such as parts, forms, etc.





There is a further possibility of carrying out synchronization of the EPLAN original master data into your system master data user-defined. To this purpose a dialog is displayed with two tables in which the system master data are compared with the EPLAN original master data. You can mark elements here and transfer them from right (original master data) to left (system master data). The selected files are overwritten.



(Dialog for user-defined synchronization of the original / system master data.)

# Appendix

## Sample E-Mail

Good morning, Mr. Doe,

You have registered your version on our website.

Registration information:

Product: EPLAN Electric P8 EDU with Fluid and PPE Add-on

Serial number: EPL0E435MA

Activation code: 6SJZHNCBH163T84UH5Y2CJD6TRDEY4DRSMGSF9

Provided data:

Company: John Doe

Form of address: Mister

Title:

First name: John

Surname: Doe

Street: Sample street 1

ZIP: 12345

City: Everytown

Country: USA

E-mail: john.doe@sample.com

Phone: 01234/123456789

Educational facility / training company: University of sample village

Course of studies: Electrical engineering

Duration: 6 terms / 3 years

Career wish: Design engineer

Student ID card / customer no.: 1234567890

Found out via: EPLAN representative

In case of questions please contact the EPLAN Support.

Regards

EPLAN Software & Service



EPLAN Software & Service GmbH & Co. KG  
An der alten Ziegelei 2  
40789 Monheim am Rhein · Germany  
Telefon: +49 (0) 21 73 / 39 64-0  
Telefax: +49 (0) 21 73 / 39 64-25  
Info@eplan.de · www.eplan.de